



Resettlement Training Course Information



PGL

training tomorrow's
workforce ... today

Preferred supplier to the
career
transition
partnership



MINISTRY OF DEFENCE



Right
Management
ManpowerGroup

The Ministry of Defence
working with
Right Management



Welcome to PGL Training

We are pleased to introduce our Forces Resettlement Course information booklet which will give you an opportunity to see what we have to offer those interested in developing a career in the construction- related trades.

PGL Training has a wealth of experience of training MOD personnel and can provide a broad range of armed forces resettlement training courses within the construction area.

If you are leaving the Army, Navy or Air Force and are planning to retrain in an exciting new career within the construction industry, then our Forces Resettlement courses will provide a solid foundation from which you can develop your new career.

Quality

We pride ourselves on our commitment to quality and to developing each person as an individual. PGL operates with small group sizes so you can be confident to receive plenty of support from your tutor. Coupled with excellent workshop facilities and learning resources, you will every opportunity to do well in your chosen course.

Support

We are committed to equality of opportunity for all learners. We do not tolerate any form of harassment or bullying and we have comprehensive Equality and Diversity and Safeguarding policies.

Our Team is small and friendly and you will soon get to know the staff on an individual basis.

Why Choose PGL?

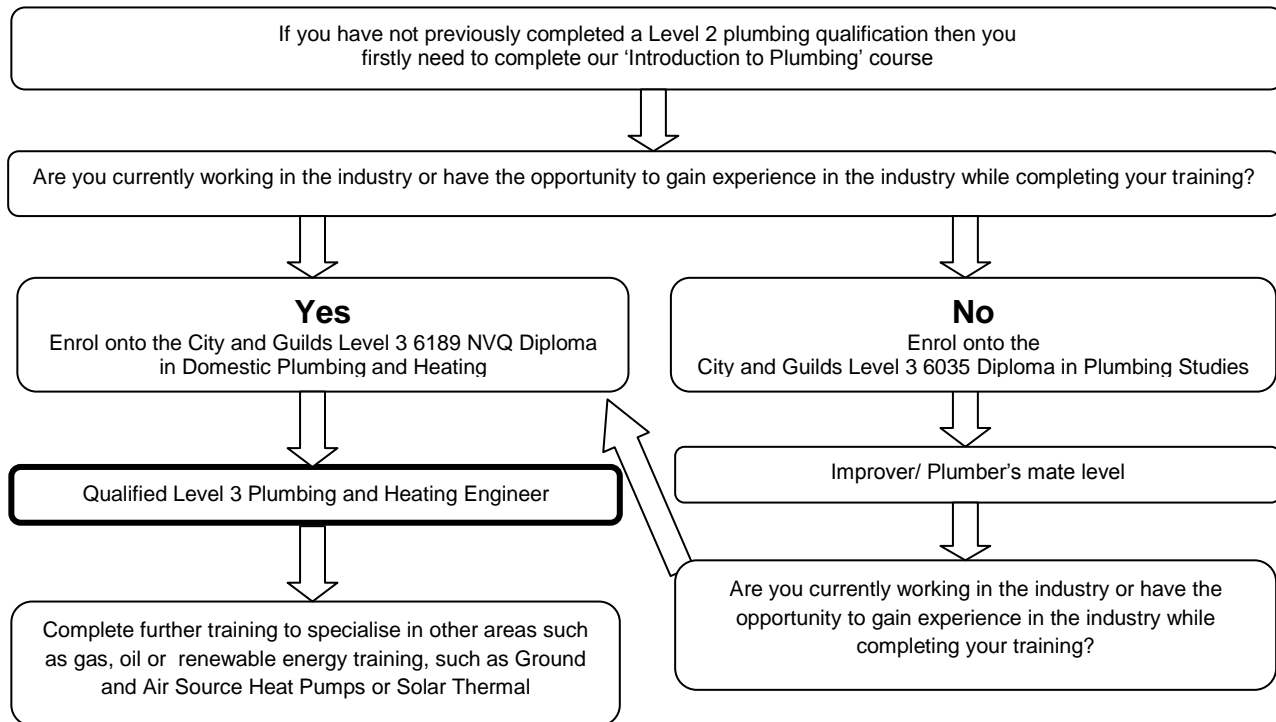
- ❖ Ofsted regulated
- ❖ Highly qualified industry- experienced staff
- ❖ Dedicated workshops for the delivery of trade skills
- ❖ Flexible delivery options
- ❖ Initial and ongoing information, advice and guidance
- ❖ Regular monitoring and reviewing progress
- ❖ Additional training support when required
- ❖ Student rest room on site

Getting Here

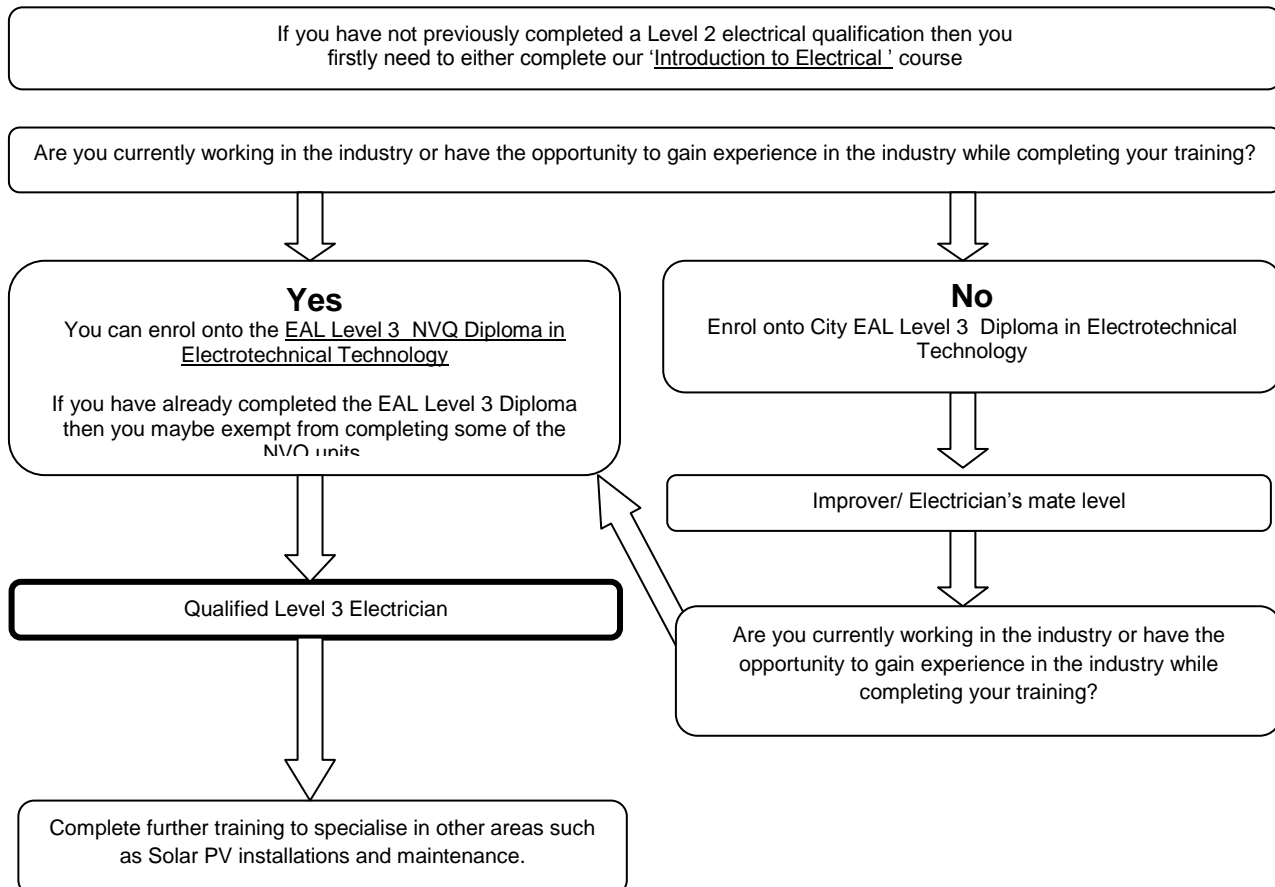
Our training centre is conveniently located 4 miles from the Lympstone, Royal Marine Training Camp, Exeter EX8 5AR)

Step by step guide:

Looking to retrain as a 'Qualified Plumber'?



Looking to retrain as a 'Qualified Electrician'?



Already got your Plumbing or Electrical qualifications?

Then why not further your career by completing one of our specialist gas, plumbing, electrical or renewable energies qualifications. More information can be found in this booklet.

Don't want to work in the Plumbing or Electrical sectors?

Then how about becoming a **Green Deal Advisor** and **Domestic Energy Assessor**? Find out more information on this qualification in the booklet.

Finance

All prices quoted are inclusive of VAT:

We are a registered centre for ELCAS and Resettlement Training Allowance. Please contact for further details.

Our ELC provider number is 2181.

19+ Advanced Learning Loans

You can apply for a 19+ Advanced Learning Loan to help with the costs of a college or training course if you're 19 or older.

Loans have to be paid back. Repayments don't start until April 2016 and you won't have to pay anything back until you earn more than £21,000 a year.

The loan doesn't depend on your income and there are no credit checks. You can get independent money advice from the Money Advice Service.

Unfortunately not all courses are available on the loan system, please contact us for the latest information.

Health and Safety

Steel toe cap shoes/boots must be worn at all times in our workshops.

To apply

Fill in the application form at the back of the booklet and return to our head office.



Introduction to Plumbing

Who is it suitable for?

For candidates who want to start a career in plumbing. This course is designed to give candidates the fundamental basic knowledge and practical skills to progress onto the Level 3 Diploma in Plumbing Studies (6035-03).

What's involved?

Candidates will learn, develop and practise the skills required for employment and career progression within the plumbing industry.

The course will cover the following areas;

- ❖ Health and safety in building services engineering
- ❖ Electrical principles and processes for building services engineering
- ❖ Scientific principles for domestic, industrial and commercial plumbing
- ❖ Common plumbing processes
- ❖ Cold water systems
- ❖ Domestic hot water systems
- ❖ Sanitation
- ❖ Central heating systems
- ❖ Drainage systems
- ❖ Understand how to communicate with others within building services engineering

Where might it lead?

Candidates can progress onto the City and Guilds Level 3 Diploma in Plumbing Studies (6035-03).

Please note that the completion of this course **does not** qualify you to work as a plumber.

Course duration

15 days approximately
(Please speak with an advisor for current attendance options)

Delivery method

Practical training in the workshop with some home study material provided for the theory understanding.

Assessment methods

After initial training, candidates will be given practical tasks to assess their knowledge and understanding.

Entry requirements

No previous plumbing experience required.

Candidates must enrol onto the 6035-03 course to be eligible for this course

How much does it cost?

The cost is £660



Level 3 Diploma in Plumbing Studies (6035-03)

Who is it suitable for?

For candidates who want to work as plumbers in the building services engineering sector.

Suitable for candidates who have previously completed the PGL 'Induction to Plumbing' course or an equivalent Level 2 Plumbing qualification.

What's involved?

This is a qualification that tests both practical and knowledge based skills through a range of practical assessments, written assignments and online exams.

The units that will be studied are;

- ❖ Health and safety in building services engineering
- ❖ Understand the fundamental principles and requirements of environmental technology systems
- ❖ Plumbing system installation planning
- ❖ Complex cold water systems
- ❖ Domestic hot water
- ❖ Sanitation and drainage systems
- ❖ Central heating systems
- ❖ Domestic gas principles
- ❖ Career awareness in building services engineering

Where might it lead?

When you have successfully completed this qualification you will be at an **Improver/Plumber's Mate level**.

In order to fully qualify as a Plumber you will need to fully meet the performance criteria as laid down in the National Occupational Standards put together by Summit Skills, the Sector Skills Council. This is covered in the **City and Guilds 6189 Level 3 NVQ Diploma in Plumbing and Heating**.

Course duration

Approximately 9 weeks full time equivalent.
(Please speak with an advisor for current attendance options)

Delivery method

A mixture of prior home study, classroom revision and workshop practical training and assessments.

Assessment methods

Online multiple choice tests, practical and written assessments.

Entry requirements

Candidates must be able to demonstrate prior plumbing knowledge and experience. This may either be through the completion of the 'Induction to Plumbing' course, or an equivalent Level 2 Plumbing qualification.

How much does it cost?

The cost is £3600



Level 3 NVQ Diploma in Domestic Plumbing and Heating (6189-31)

Environmental pathway

Who is it suitable for?

This qualification is only available to candidates working within the plumbing industry that have either completed a Level 2 Plumbing qualification or the 'Introduction to Plumbing' course at PGL Training.

What's involved?

Candidates will complete practical assessments, written assignment and online exams. If candidates have already completed the City and Guilds 6035-03 qualification then they maybe exempt from many of the below units:

- Understand how to organise resources within BSE
- Understand and apply domestic cold water system installation, commissioning, service and maintenance techniques
- Understand and apply domestic hot water system installation, commissioning, service and maintenance techniques
- Understand and apply domestic central heating system installation, commissioning, service and maintenance techniques
- Understand and carry out electrical work on domestic plumbing and heating systems and components
- Understand and apply domestic sanitation system installation, commissioning, service and maintenance techniques
- Install, commission, service and maintain domestic plumbing and heating systems - (Work based NVQ unit)
- Understand the fundamental principles and requirements of environmental technology systems
- Inspect, service and maintain 'active' solar thermal hot water systems
- Know the requirements to inspect, service and maintain 'active' solar thermal hot water systems
- Install, commission and handover 'active' solar thermal hot water systems
- Know the requirements to install, commission and handover solar thermal hot water systems

Where might it lead?

On completion of this qualification candidates may progress into employment as a qualified Plumber.

Course duration

Approximately 9 weeks full time equivalent at PGL to complete the college based assessments. The time it takes to complete the workplace portfolio will vary per candidate.

(Please speak with an advisor for current attendance options)

Delivery method

A mixture of prior home study, classroom revision and workshop practical training and assessments.

Development of a portfolio in a working environment

Assessment methods

Practical assessments, written assignments, online exams, workplace assessments, documented evidence of 'real life' jobs and witness testimonials.

Entry requirements

Candidates must be able to demonstrate prior plumbing knowledge and experience.

This may either be through the completion of the 'Induction to Plumbing' course, a Level 2 Plumbing qualification or 6035 level 3 qualification.

How much does it cost?

£4600

If the Level 3 Diploma has been completed the NVQ only costs £1250.



New Entrant Gas Course

(Category 2 applicants)

Who is it suitable for?

For candidates who have completed a Level 2 or Level 3 NVQ Diploma in Plumbing and Heating who, want to start a career in Domestic Gas Engineering. This course is designed to give candidates the fundamental basic knowledge and practical skills to progress into the domestic gas engineering trade.

What's involved?

1. Initially candidates will attend PGL Training to undertake two weeks in house training. This initial two weeks will include Candidate Induction, Completion of the Learning Contract/Agreement, Gas Safety (Installation and Use), Regulations, Unsafe Situation Procedure and Completion of "Off the Job" task sheets.
2. The candidates will then return to their employer/placement for a minimum of 5 five weeks to complete the "On the job task sheets and collect any relevant evidence for their portfolio.
3. Candidates will then return to PGL Training for a further one week to complete their final in house training.
4. Candidates can then book in to complete their ACS Domestic Gas Assessments:

Core Domestic Gas Safety - Natural Gas CCN1 including CPA1
Domestic Appliances: CENWAT Boilers and Water Heaters
Range of appliances - Fires - HTR1
Domestic Gas Cooking Appliances - CKR1

How much do the courses cost?

New Entrant course	-	£1320 + £120 Certification Fee
ACS Gas Assessments	-	£720



New Entrant Gas Course

(Category 3 applicants)

Who is it suitable for?

For candidates who want to start a career in Domestic Gas Engineering. This course is designed to give candidates the fundamental basic knowledge and practical skills to progress into the domestic gas engineering trade.

What's involved?

5. Initially candidates will attend PGL Training to undertake two weeks in house training. This initial two weeks will include Candidate Induction, Completion of the Learning Contract/Agreement, Gas Safety (Installation and Use), Regulations, Unsafe Situation Procedure and Completion of "Off the Job" task sheets.
6. The candidates will then return to their employer/placement for a minimum of 5 five weeks to complete the "On the job task sheets and collect any relevant evidence for their portfolio.
7. The candidates will the return to PGL training for a further 2 weeks to continue their in house training.
8. The candidates will the return to their employer/placement for a further five weeks to continue to complete their "On the job task sheets and collect any relevant evidence for their portfolio.
9. Candidates will then return to PGL Training for a further one week to complete their final in house training.
10. Candidates can then book in to complete their ACS Domestic Gas Assessments:

Core Domestic Gas Safety - Natural Gas CCN1 including CPA1
Domestic Appliances: CENWAT Boilers and Water Heaters
Range of appliances - Fires - HTR1
Domestic Gas Cooking Appliances - CKR1

How much do the courses cost?

New Entrant course	-	£1680 + £120 Certification Fee
ACS Gas Assessments	-	£720



Introduction to Electrical

Who is it suitable for?

For candidates who want to start a career in electrical. This course is designed to give candidates the fundamental basic knowledge and practical skills to progress onto the Level 3 Diploma in Electrical Installations (EAL).

What's involved?

Candidates will learn, develop and practise the skills required for employment and career progression within the electrical industry.

The course will cover the following areas;

- ❖ Applicable Building Regulations for Domestic Electrical Installation
- ❖ Electrical Safety legislation, Regulations Standards and Terminology
- ❖ Basic AC supply characteristics
- ❖ OHM's Law
- ❖ Installing all electrical circuits
- ❖ Electrical Earthing and Bonding Requirements

Course duration

8 days
(Please speak with an advisor for current attendance options)

Delivery method

Classroom/workshop environment at our Training Centre

Assessment methods

After initial training, candidates will be given practical tasks to assess their knowledge and understanding.

Entry requirements

No previous electrical experience required.

Candidates must enrol onto the EAL Level 3 Diploma course to be eligible for this course

How much does it cost?

The cost is £660



Level 3 Diploma in Electrical Installations (EAL)

Who is it suitable for?

For candidates who want to work as electricians in the building services engineering sector.

Suitable for candidates who have previously completed the PGL 'Induction to Electrical' course or an equivalent Level 2 Electrical qualification.

What's involved?

This is a qualification that tests both practical and knowledge based skills in a realistic working environment.

The units that will be studied are;

- ❖ Health and safety in building services engineering
- ❖ Understand the fundamental principles and requirements of environmental technology systems
- ❖ Principles of electrical science
- ❖ Electrical installations: fault diagnosis and rectification
- ❖ Electrical Installations: inspection, testing and commissioning
- ❖ Electrical systems design
- ❖ Career awareness in building services engineering

Where might it lead?

When candidates have successfully completed this qualification they will be at an **Improver/Electrician's Mate** level.

In order to fully qualify as an Electrician, candidates will need to fully meet the performance criteria as laid down in the National Occupational Standards put together by Summit Skills, the Sector Skills Council. This is covered in the EAL Level 3 NVQ Diploma in Electrotechnical Technology.

Course duration

Approximately 9 weeks full time equivalent.
(Please speak with an advisor for current attendance options)

Delivery method

A mixture of prior home study, classroom revision and workshop practical training and assessments.

Assessment methods

Online multiple choice tests, practical and written assessments.

Entry requirements

Candidates must be able to demonstrate prior electrical knowledge and experience. This may either be through the completion of the 'Induction to electrical' course, or an equivalent Level 2 Electrical qualification.

How much does it cost?

The cost is £3600



EAL Level 3 NVQ Diploma in Electrotechnical Technology

Who is it suitable for?

This qualification is only available to candidates already working within the electrical industry.

Candidates are required to demonstrate the ability to perform the necessary skills and the knowledge required to be assessed against the National Occupational Standards.

What's involved?

The qualification covers the following areas: Health and Safety legislation, Environmental legislation, Practices and procedures for overseeing and organising the work environment. Principles of planning and selection for the installation of electrotechnical equipment and systems. Practices and procedures for the preparation and installation of wiring systems and electrotechnical equipment. Cable termination. Inspection and testing. Fault finding and Electrical principles

The Level 3 qualification includes the Diploma and NVQ. If a candidate has already completed the Diploma (EAL) then they will only be required to complete the remaining NVQ units to gain the full Level 3 NVQ Diploma.

The qualification is work based. Candidates build up a portfolio of evidence and have observations from our assessors.

Where might it lead?

On completion of this qualification candidates may progress into employment as a qualified Electrician.

Course duration

We would estimate a minimum of 12 months
The time it takes to complete the workplace portfolio will vary per candidate.

(Please speak with an advisor for current attendance options)

Delivery method

A mixture of prior home study, classroom revision and workshop practical training and assessments.

Development of a portfolio in a working environment

Assessment methods

Practical assessments, written assignments, online exams, workplace assessments, documented evidence of 'real life' jobs and witness testimonials.

Entry requirements

Must be working within the electrical industry with a qualified supervisor.

Must have prior knowledge and experience of electrical, ideally with a Level 2 qualification or Level 3 Diploma.

How much does it cost?

£4600

If the Level 3 Diploma has been completed the NVQ only costs £1250.



Introduction to Site Carpentry

Who is it suitable for?

For candidates who want to start a career in Carpentry. This course is designed to give candidates the fundamental basic knowledge and practical skills to progress onto the Level 3 Diploma in Site Carpentry.

What's involved?

Candidates will learn, develop and practise the skills required for employment and career progression within the carpentry industry.

The course will cover the following areas;

11. Health, Safety and Welfare in Construction
12. Principles of construction, information and communications
13. Basic cutting and jointing skills
14. Basic theory of first fix operation and techniques

Where might it lead?

Candidates can progress onto the City and Guilds Level 3 Diploma in Site Carpentry.

Please note that the completion of this course **does not** qualify you to work as a site carpenter.

Course Duration: 2 weeks full time equivalent

Delivery method: Classroom and workshop training

Assessment method: Centre based practical assessments, written assessments.

Entry requirements: Candidates must be aged 16 or over.

How much does it cost? £660



Level 3 Diploma in Site Carpentry

Who is it suitable for?

This qualification is for candidates who want to advance their skills and knowledge to work as a site carpenter in the construction sector.

What's involved?

Candidates will attend PGL training to carry out theory and practical training and complete a range of multi choice tests, written assignments and practical assessments in the following units:

15. Health, Safety and Welfare in Construction
16. Principles of construction, information and communications
17. Construction methods and technology
18. Carry out first fix operation and techniques
19. Carry out second fix operation and techniques
20. Carry out erecting complex structural carcassing components
21. Carry out maintenance on non structural and structural components
22. Setting up and operations of fixed and transportable machinery

Where might it lead?

On completion of this qualification candidates may progress onto the Level 3 NVQ in site carpentry to become a fully qualified Level 3 Carpenter

Course Duration: 9 weeks full time equivalent

Delivery method: Classroom and workshop training

Assessment method: Centre based practical assessments, written assessments and online multiple choice exams

Entry requirements: Candidates must be able to demonstrate prior carpentry knowledge and experience. This may either be through the completion of the "Introduction to carpentry" course or an equivalent Level 2 Carpentry qualification

How much does it cost? £3600



Level 3 NVQ Diploma in Site Carpentry

Who is it suitable for?

This qualification is assessment only and therefore only suitable for candidates who are working in the construction industry and either have previous experience or having completed the Level 3 Diploma in Site Carpentry. This qualification will give the candidate industry recognition as a qualified Site Carpenter.

What's involved?

Learners must achieve the required units to fulfil the criteria from the mandatory and optional units associated with this qualification.

Mandatory Units:

- Conforming to general health, safety and welfare in the workplace
- Conforming to productive working practices in the workplace
- Moving, handling and storing resources in the workplace

Optional Units:

23. Erecting structural carcassing components in the workplace
24. Installing first fix components in the workplace
25. Installing second fix components in the workplace
26. Maintaining non - structural carpentry work in the workplace
27. Setting up and using transportable machinery in the workplace

Outcome: Candidates will be classed as fully qualified Level 3 Site Carpenters

Course Duration: The duration depends on the individual. We would estimate a minimum of 6 months

Delivery method: This course is work based

Assessment method: Direct evidence produced through normal performance in the workplace and direct observations

Entry requirements: Candidates must be working in the industry and complete the Level 3 Diploma course in Site Carpentry

How much does it cost? £4600
If the Level 3 Diploma has been completed the NVQ only costs £1250.



Introduction to Brickwork

Who is it suitable for?

For candidates who want to start a career in Brick Work. This course is designed to give candidates the fundamental basic knowledge and practical skills to progress onto the Level 3 Diploma in Brickwork.

What's involved?

Candidates will learn, develop and practise the skills required for employment and career progression within the building industry.

- 28. Health, Safety and Welfare in Construction
- 29. Theory of Brick Work
- 30. Building methods and construction technology
- 31. Basic Brickwork techniques
- 32. Carry out basic repairs and maintenance on Masonry Structures

Where might it lead?

Candidates can progress onto the City and Guilds Level 3 Diploma in Plumbing Studies (6035-03).

Please note that the completion of this course **does not** qualify you to work as a Brick Worker.

Course Duration: 2 weeks full time equivalent

Delivery method: Classroom and workshop training

Assessment method: Centre based practical assessments, written assessments.

Entry requirements: Candidates must be aged 16 or over.

How much does it cost? £660



Level 3 Diploma in Brickwork

Who is it suitable for?

This qualification is for candidates who want to advance their skills and knowledge to work in Brickwork in the construction sector.

What's involved?

Candidates will attend PGL training to carry out theory and practical training and complete a range of multi choice tests, written assignments and practical assessments in the following units:

- 33. Health, Safety and Welfare in Construction
- 34. Principles of construction, information, quantities and communications
- 35. Building methods and construction technology
- 36. Structural and Decorative Brickwork techniques
- 37. Carry out repairs and maintenance on Masonry Structures
- 38. Carry out Erecting Complex Masonry Structures

Where might it lead?

On completion of this qualification candidates may progress onto the Level 3 NVQ in site brickwork to become a fully qualified Level 3 Brickworker

Course Duration: 9 weeks full time equivalent

Delivery method: Classroom and workshop training

Assessment method: Centre based practical assessments, written assessments and online multiple choice exams

Entry requirements: Candidates must be able to demonstrate prior carpentry knowledge and experience. This may either be through the completion of the “Introduction to carpentry” course or an equivalent Level 2 Carpentry qualification

How much does it cost? £3600



Level 3 NVQ Diploma in Brickwork

Who is it suitable for?

This qualification is assessment only and therefore only suitable for candidates who are working in the construction industry and either have previous experience or having completed the Level 3 Diploma in brickwork. This qualification will give the candidate industry recognition as a qualified Brick worker.

What's involved?

Learners must achieve the required units to fulfil the criteria from the mandatory and optional units associated with this qualification.

- 39. Health, Safety and Welfare in Construction
- 40. Principles of construction, information, quantities and communications
- 41. Building methods and construction technology
- 42. Structural and Decorative Brickwork techniques
- 43. Carry out repairs and maintenance on Masonry Structures
- 44. Carry out Erecting Complex Masonry Structures

Outcome: Candidates will be classed as fully qualified Level 3 Brick Worker

Course Duration: The duration depends on the individual. We would estimate a minimum of 6 months

Delivery method: This course is work based

Assessment method: Direct evidence produced through normal performance in the workplace and direct observations

Entry requirements: Candidates must be working in the industry and complete the Level 3 Diploma course in Site Carpentry

How much does it cost? £4600
If the Level 3 Diploma has been completed the NVQ only costs £1250.



Level 1 Construction, including the Level 1 Health and Safety and CITB CSCS card training.

Who is it suitable for?

For candidates who want to start a career in Property Maintenance. This course is designed to give candidates the fundamental basic knowledge and practical skills to progress onto the Level 3 Unit Package in Property Maintenance course.

What's involved?

Candidates will learn, develop and practise the skills required for employment and career progression within the construction industry.

- 45. Health, Safety and Welfare in Construction
- 46. Theory of Property Maintenance
- 47. Building methods and construction technology
- 48. Basic Property Maintenance techniques
- 49. Carry out basic repairs and maintenance on properties
- 50. Level 1 Health and Safety certificate training
- 51. CITB CSCS card training

Where might it lead?

Candidates can progress onto the Cskills Level 3 Unit Package in Property Maintenance. Please note that the completion of this course **does not** qualify you to work as a Property Maintenance Worker.

Course Duration: 2 weeks full time equivalent

Delivery method: Classroom and workshop training

Assessment method: Centre based practical assessments, written assessments.

Entry requirements: Candidates must be aged 16 or over.

How much does it cost? £660



Level 3 Unit Package in Property Maintenance course

Who is it suitable for?

This qualification is for candidates who want to advance their skills and knowledge to work in Property Maintenance in the construction sector. Covering Plumbing, Brickwork, Wall and Floor Tiling, Plastering and Carpentry.

What's involved?

Candidates will attend PGL training to carry out theory and practical training and complete a range of multi choice tests, written assignments and practical assessments in the following units:

- 52. Safety and Welfare in construction and associated industry
- 53. Analysing technical information, quantities and communications with others
- 54. Analysis of the construction industry and built environment
- 55. Understanding resources in Building Services Engineering
- 56. Career Awareness in Building Services Engineering

Where might it lead?

On completion of this qualification candidates may progress onto their chosen Level 3 NVQ Diploma.

Course Duration: 5 weeks full time equivalent

Delivery method: Classroom and workshop training

Assessment method: Centre based practical assessments in Plumbing, Brickwork, Wall and Floor Tiling, Plastering, Carpentry, written assessments and online multiple choice exams

Entry requirements: Candidates must be able to demonstrate prior property maintenance knowledge and experience. This may either be through the completion of the “Level 1 Construction Course, including the Level 1 Health and Safety and the CITB CSCS card course” or an equivalent Level 2 Property Maintenance qualification

How much does it cost? £2500



Short Plumbing Training Courses

Gas Assessments

Suitable for plumbing and heating engineers that hold a Level 2 NVQ in Plumbing and have been working alongside an experienced GasSafe registered engineer.

Core Domestic Gas Safety – Natural Gas CCN1 including CPA1

Gas-assessment cost: £350.00 + VAT inclusive of training and assessment*

Gas-assessment Duration: 1 day training and approximately 2 days assessments

Domestic Appliances

CENWAT Open flued, balanced flued (natural draught and fan assisted) central heating/hot water boilers and circulators, condensing boilers, back boiler units, combination boilers and combination units

Initial: £300+VAT*

Re-assessment: £160+VAT*

HTR1 Range of appliances covered – Open flued gas fire (radiant/convector), open flued inset live fuel effect gas fire (ILFE), open flued decorative fuel effect gas fire (DFE) balanced flued gas fire and balanced fan assisted wall heater.

Initial: £150+VAT*

Re-assessment: £80+VAT*

CKR1 – Domestic gas cooking appliances. Range of appliances covered – Free standing and slide in cookers, built-in hotplates, built-in/under ovens and grill units

Initial £150+VAT*

Re-assessment: £80+VAT*



Short Plumbing Training Courses

OFTEC Oil Courses (Training and Assessment)

- ❖ OFT 101 - Domestic/Light Commercial Commissioning & Servicing Assessment
- ❖ OFT 105E - Domestic/Light Commercial Installation
- ❖ OFT 600A - Oil Storage Tank Installation
- ❖ OFT 102 - Vaporising Burners

F-Gas (Category 1) City & Guilds 2079 & BRA Commercial Braizing

The course is aimed at experienced heating engineers wishing to increase their knowledge and include work with F-Gas and O-Zone Depleting substances (ODS) within refrigeration, air conditioning and heat pump systems. The course will provide theoretical and practical tuition on the latest requirements relating to the F-Gas regulations.

Duration: 5 days

WRAS Water Regulations

Duration: 1 day (½ day training and ½ day assessment)

Unvented Hot Water Systems

Duration: 1 day

Energy Efficiency For Domestic Heating

Duration: 1 day



Short Electrical Training Courses

City & Guilds 2391 Initial Verification/Periodic Inspection, Testing & Certification of Electrical Installations

This is a package course designed for practicing electricians or anyone involved in the inspection & testing of electrical systems who wish to carry out Initial Verification & Periodic Inspection, Testing and certification of Electrical Installations.

Duration: 5 days

Portable Appliance Testing (PAT) City & Guilds 2377

This qualification is for candidates who are practising electricians either involved in, or looking to become involved in, the inspection and testing of electrical equipment (eg portable appliances), and/or involved in managing the process of it.

Duration: 2 days

17th Edition - City & Guilds 2382-10

This qualification ensures candidates are up-to-date with the latest industry regulation on wiring and the safe use and operation of electrical equipment and systems. It covers the 17th Edition of the IEE Wiring Regulations, which came into force in June 2008. These regulations are recognised by the British Standards Institute as a British Standard

Duration: 3 days

Electrics and Boiler Fault Finding/Boiler Management

The course will cover the basic electrical principals, wiring of heating systems including bonding, use of multi-meters, wiring of Y, S C and W plan systems and fault-finding within these systems. The course also covers all of the different boiler and system types, including combi and condensing boilers, use of multi-meters and flow charts in fault-finding

Duration: 3 days

For specific course details and prices please call our Head Office on 01392 437373.



Renewable Energy Training Courses

At PGL Training, we offer a variety of specialist courses focussed on the renewable energy sector.

All of the courses listed below are Level 3.

Installation & Maintenance of Small Scale Solar Photovoltaic (PV) Systems (EAL)

Duration: 5 days (including training on COSHH, Working at Heights & Manual Handling)

Ground Source & Air Source Heat Pump Installation

Duration: 4 days

Solar Thermal

Duration: 2 days

Underfloor Heating

Duration: 2 days

Rainwater and Greywater Harvesting

Duration: 1 day

Please contact us to find out specific course prices, dates and eligibility criteria. Some of the courses are available at a discounted price when booked as a package.

For specific course details and prices please call our Head Office on 01392 437373.



Standard Learning Credits SLCs (£175.00)

Target Audience: UK Service Personnel - Regulars & Reservists
Individuals must take advice from their local Education Officer to understand the eligibility of using SLC for a course. Then follow the procedure of Applying and Claiming. Please note this should be prior to the starting &/or paying for the course.

1. Applying -

Prior to committing for the course Complete MOD Form 1950 → Get Line manager's approval on the form → Submit to your local Education Centre for further approval → Once approved individuals can commit to the course.

The Individual Resettlement Training Costs (IRTC) grant

The IRTC grant is available to Service leavers with six or more years' service and all Medical Discharges. It is a contribution to training costs and can be used internally at the Resettlement Training Centre (RTC), Aldershot or at a Regional Resettlement Centre (RRC) for vocational training courses. It can also be used externally for training with CTP Preferred Suppliers. (Such as PGL Training).

IRTC is available for tuition fees up to a maximum of £534.

A range of courses at the RTC Aldershot is delivered within the MOD contract (called **Contract Funded** training).



These courses are pre-paid by the MOD and only 'cost' the Service leaver time and a portion of the £534 allowance.

No money changes hands for the training but days and funding are deducted from the GRT allocation at a rate of £26.70 per day. The £534 gives access up to 20 days of CF training. Any exam or registration fees are extra and payable by the students but other allowances may be available to help with those.

The CTP also offers a range of courses that are not within the MOD contract known as **Non-Contract Funded** courses and you can use your IRTC grant or ELC to pay for these (see below for further information on ELC funding).

Enhanced Learning Credits (ELC) .

Please see your Service Resettlement Adviser for more details. Enhanced Learning Credits (ELC) can be used for resettlement training both with CTP's non Contract funded course programme and Preferred Supplier external ones.

Strict conditions apply for using ELC funding and you are advised to contact your Service Resettlement Advisor



ELCAS credits:

Make sure you understand the regulations – see Joint Service Publication JSP898 – Defence Direction and Guidance on Training, Education and Skills, which can be downloaded from the ELCAS website at www.enhancedlearningcredits.com

Consult your education/learning staff and line managers to discuss your personal development plan.

Be prepared to provide evidence that the course you would like to do is at least level 3 (or equivalent) on the National Qualifications Framework (NQF) or Qualifications and Credit Framework (QCF),* and that it directly benefits the Service (unless your claim is resettlement-related during your last two years of serving).

Ensure the course provider has approved provider status by checking it out on the ELCAS website at www.enhancedlearningcredits.com

Ensure the training is delivered by an approved ELC provider if using your Individual Resettlement Training Cost (IRTC) grant along with ELC to fund a nationally recognised qualification at level 3 or above

Consult your education, learning, training and/or resettlement adviser if you aren't sure of the best way to use funding for your resettlement training.

Remember that the scheme operates a strict 'three hits and you're out' policy, so think carefully before submitting a claim.

Complete and return the evaluation questionnaire when you've finished your studies; if you don't, and can't provide evidence that you completed the course, your future claims will be denied.



Further help and support

PGL Training are able to offer all of our learners free support and training with CV writing, job searching and interview techniques.

We deliver certificated courses in English, Mathematics and ICT for those who have not achieved a qualification before or are looking to refresh their knowledge.

Please get in contact to find out more information about the training available.

Finance

We are a registered centre for ELCAS and Resettlement Training Allowance.

For further information on financial assistance available to support your learning, please visit the following government websites:

www.gov.uk/browse/education/student-finance

www.gov.uk/advanced-learning-loans

SLC and IRTC are often used to fund Introduction and short courses.

19+ Loans

Individuals are able to take advantage of the Governments 19+ system where those over the age of 19 are able to borrow funding to cover or go towards the cost of certain level 3 courses.

A combination of SLC, IRTC, ELCAS credits and 19+ loans can be used to fund all Level 3 courses offered by the training provider which, are on the 19+ loan course list. Level 3 Plumbing and Electrical are examples of two courses we offer that can be funded with all of these.

Further information can be provided regarding the 19+ loans, how to apply and frequently asked questions. Please ask for further details.

Application form- Forces Resettlement Training

Please complete the application form and return to PGL Training, Clyst Works, Clyst road, Topsham, Exeter, EX3 0DB. One of our members of staff will then give you a call to finalise the booking.

Course name and preferred start date	
--------------------------------------	--

Personal Details (to be fully completed)		
Surname:	Forename(s):	Mr/Mrs/Miss/Ms:
Date of Birth:	Age:	N.I. Number:
Home Address:	Telephone Number:	
Post Code:	Mobile Number:	
E-mail Address:		
Sign	Date	



Contact Us

**01392 437373 | enquiries@pgltraining.com
www.pgltraining.com**

Exeter Training Centre

Clyst Works, Clyst road, Topsham, Exeter, EX3 0DB